

2011 Ever-Lite by Evergreen

VALUE - INNOVATION - QUALITY

# 2011 EVER-LITE™ by EVERGREEN



Green Certified RV  
Manufacturer.



WWW.GOEVERGREENRV.COM

# Ever-Lite Travel Trailers

The Ever-Lite™ is perfect for the camper who wants the amenities of a full featured travel trailer wrapped up in an aerodynamic lightweight package.

Everyone ends up in the kitchen! The combination of a large dinettes, slide out galleys with jack-knife sofas, and plenty of cooking and food prep spaces makes Ever-Lite the perfect trailer for any family.

Kitchens come complete with double door refrigerator/freezers, three-burner ranges with folding range cover, microwave convection ovens, and two sink covers over a 60/40 split composite sink. A power exhaust range hood with light, wood knife rack and mini-blinds provide nice details.

Other interior features include six-foot, six-inch interior ceiling height throughout. Solid wood mortised cabinet doors on cabinetry that is both screwed and glued into place to assure long-term quality. Wood interior door casings, ceiling crown moldings, decorative borders and enhanced interior lighting packages are standard to provide a residential feel.

The extra large dinette window and awning style crank-out windows are designed to allow ventilation on rainy days.

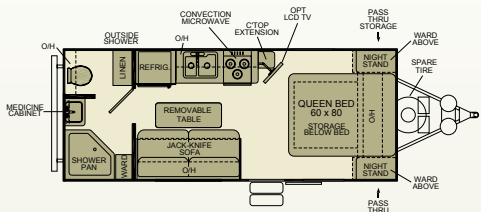


# Ever-Lite Fifth Wheels

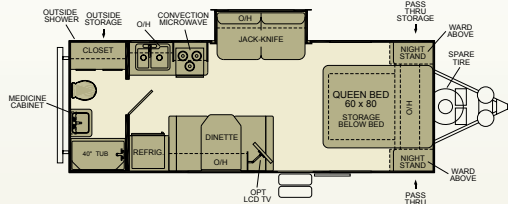


**E**verGreen™ RV is revolutionizing the recreational vehicle industry with a new generation of innovative, sustainable, eco-friendly, travel trailers and fifth wheels that are as healthy for your family as they are for our environment. EverGreen™ RV's new CompositTek™ Construction process produces a trailer that's built with the latest in lightweight, composite materials taking the place of wood and wood substrates used in conventional RV construction. You can breathe easy with EverGreen™ RV. Eliminating wood substrates and other out-dated, non-sustainable materials virtually eradicates formaldehyde and out-gassing to make EverGreen™ products healthier for your entire family. Another benefit is your RV will be more durable and last longer because it will resist water, rot, mold, mildew and deterioration—thus extending the life and resale value far beyond the life cycle of conventionally built RVs of today. Our goal to produce the most environmentally friendly recreational vehicles ever manufactured on the planet doesn't just end with EverGreen™ products.

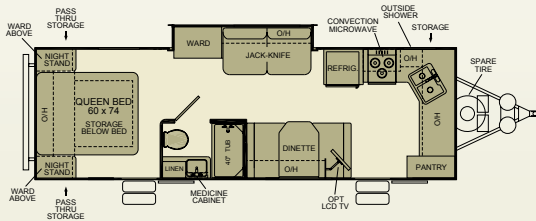




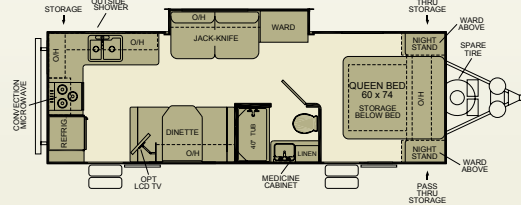
**MODEL 25RB** WEIGHT: 4,169



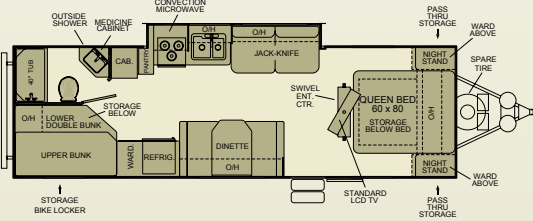
**MODEL 27RB** WEIGHT: 4,441



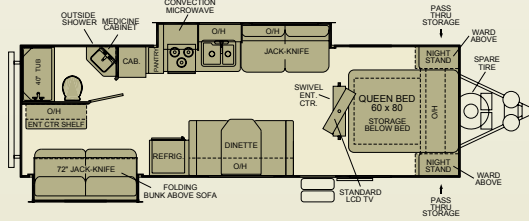
**MODEL 29FK** WEIGHT: 4,998



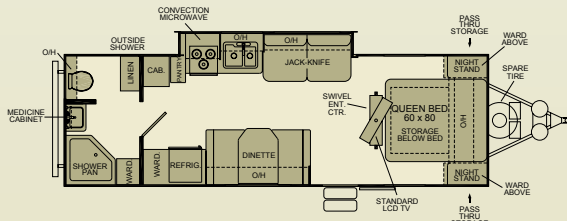
**MODEL 29RK** WEIGHT: 4,992



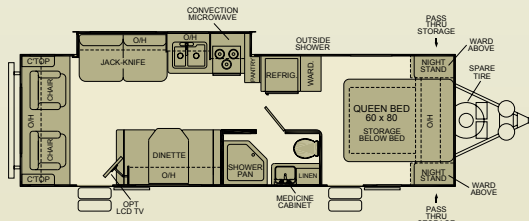
**MODEL 31BHS** WEIGHT: 5,273



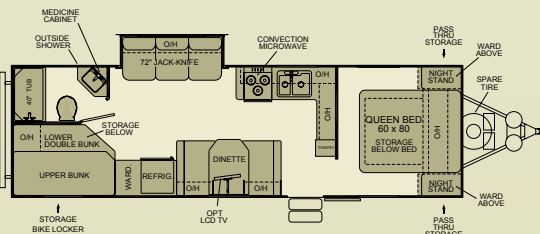
**MODEL 31DS** WEIGHT: 5,498



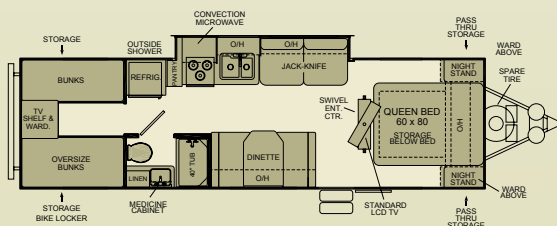
**MODEL 31RB** WEIGHT: 5,210



**MODEL 31RLS** WEIGHT: 5,268

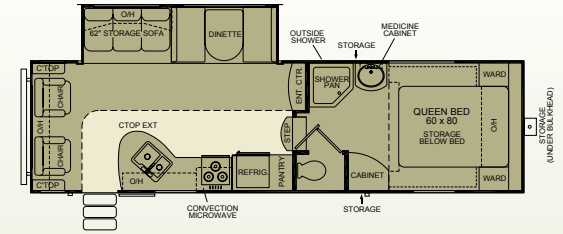


**MODEL 32MKS** WEIGHT: 5,341

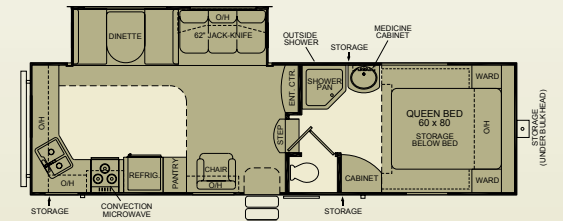


**MODEL 33QB** WEIGHT: 5,647

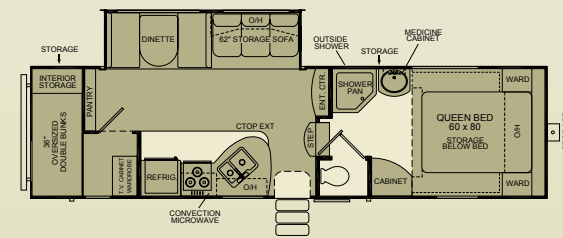
## Mid Profile Fifth Wheels



**MODEL 30RLS-5** WEIGHT: 7,334



**MODEL 30RKS-5** WEIGHT: \*7,472



**MODEL 31BHS-5** WEIGHT: \*7,670

Americans throw away 25 billion Styrofoam coffee cups every year, and 2.5 million plastic beverage bottles every hour.

# Decor

At least 50 million acres of rainforest are lost every year, totaling an area the size of England, Wales and Scotland combined.



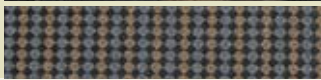
Sage Decor (above) and Accent (below)



Blue Decor (above) and Accents (below)



Truffle Decor (above) and Accent (below)



# Specifications

All specifications are subject to change without notice or obligation. Some features shown on plans may be optional, or not available in Canada. This brochure applies to all Ever-Lite™ models built after 08/09.

..... Travel Trailers .....

..... Fifth Wheels .....

	<u>25RB</u>	<u>27RB</u>	<u>29FK</u>	<u>29RK</u>	<u>31BHS</u>	<u>31DS</u>	<u>31RB</u>	<u>31RLS</u>	<u>32MKS</u>	<u>33QB</u>	<u>30RLS-5</u>	<u>30RKS-5</u>	<u>31BHS-5</u>
Total Dry Weight* (UVW):	4,169	4,441	4,998	4,992	5,273	5,498	5,210	5,268	5,341	5,647	7,334	*7,472	*7,670
Dry Hitch Weight* (LBS):	495	632	593	513	645	517	538	637	677	642	1,223	*1,195	*1,227
GVWR* (LBS):	6,095	6,232	7,593	7,513	7,645	7,517	7,538	7,637	7,677	7,642	10,023	*9,995	*10,027
Fresh Water Capacity (GAL):	40	40	40	40	40	40	40	40	40	40	53	53	53
Gray Water Tank Capacity (GAL):	29	29	58	58	29	29	29	29	58	29	58	58	58
Black Water Tank Capacity (GAL):	29	29	29	29	29	29	29	29	29	29	29	29	29
LP Capacity (LBS):	60	60	60	60	60	60	60	60	60	60	60	60	60
Cargo Carrying Capacity* (LBS):	1,534	1,399	2,176	2,099	1,980	1,627	1,936	1,977	1,944	1,603	2,189	*2,023	*1,857
Overall Length:	25'11"	27'6"	29'7"	29'7"	32'4"	32'4"	31'2"	31'10"	33'6"	33'8"	30'10"	31'5"	32'3"
Height (including A/C):	10'	10'	10'	10'	10'	10'	10'	10'	10'	10'	12'1"	12'1"	12'1"
Width:	8'1"	8'1"	8'1"	8'1"	8'1"	8'1"	8'1"	8'1"	8'1"	8'1"	8'1"	8'1"	8'1"
Bed Size:	60" x 80"	60" x 80"	60" x 74"	60" x 74"	60" x 80"	60" x 80"	60" x 80"	60" x 80"	60" x 80"	60" x 80"	60" x 80"	60" x 80"	60" x 80"
Tires:	----- ALL TRAVEL TRAILER MODELS UTILIZE ST205/75 R14(C) TIRES -----										---- ST225/75 R15(D) TIRES ----		
Power Awning Length:	16'	18'	20'	20'	18'	16'	18'	16'	18'	16'	20'	20'	20'

**WEIGHT TERM GLOSSARY:**

**Gross Vehicle Weight Rating (GVWR)** is the maximum allowable weight of the trailer when fully loaded including all personal possession, propane gas, water, and the actual trailer.

**Unloaded Vehicle Weight (UVW)** is the weight of the trailer. **Cargo Carrying Capacity (CCC)** is equal to the GVWR minus each of the following: UVW, full fresh water weight including the water heater capacity, and full propane.

\* All weights are approximate

## Exterior

- Automotive Bronze High Gloss Gel Coat Exterior
- Dark Tinted Safety Glass Windows
- Door Side Patio And Security Lights
- TV Cable And LCD TV Bracket / Hook Up
- 110v Recept At Awning With Interior Switch
- E-Z Lube Hubs
- Exterior Speakers
- Front And Rear Stabilizer Jacks (4)
- Diamond Plate Front Stone Guard
- Oversized, Lighted Exterior Pass-Through Storage
- 110v Outside Recept (At Ground Level)
- Pack-N-Play Storage Door On Bunk Models
- Rain Gutters And Extended Down Spouts
- Composite Baggage Doors
- Nitrogen Filled Balanced Tires
- Aluminum Wheels (ICF Technology)
- LED Taillights and Clearance Lights
- LED Exterior Step Light
- Deep Tint Over-Sized Awning Windows w/ Center Operation Knob
- MAXX Aire Vent Over the Bedroom Exhaust Fan

## Interior

- Solid Wood Mortised Cabinet Doors
- Raised Panel Wood Overhead Cabinet Doors
- Screwed And Glued Cabinetry
- Ceiling Crown Moldings
- Dual Action Interior Ceiling Lights
- Jackknife Steel Framed Sofa
- Décor Mirror
- Extra Large Dinette Window
- Jalousie Crank-Out Windows For Use In The Rain
- Raised Panel Interior Passage Doors
- Decorative Border
- Wall Mounted Interior Light Switches
- Padded "No Crack" Vinyl Flooring Throughout
- Enhanced Interior Accents
- Grab Handle at Main Entrance

## Kitchen

- Power Exhaust Range Hood With Light
- Wood Knife Rack
- Plywood Drawers With Ball Bearing Guides
- Mini-Blinds
- Double Door Refrigerator/Freezer
- 3 Burner Range With Folding Range Cover
- Convection Microwave Oven
- 60/40 Split Composite Sink with Covers

## Bathroom

- Skylight Over Shower/Tub
- Large Medicine Cabinet/Mirror
- Recessed Over Head Vanity Light
- Toothbrush Holder And Towel Bar
- Full Tub/Shower Surround
- Water Saver Hand Sprayer In Shower/Tub
- Space Maker Radius Shower Rod & Curtain
- Oil Rubber Bronze Shower Door Frame (Shower Models Only)
- Power Exhaust Fan

## Bedroom

- Comfort Fiber Eco Pillow Top Mattress
- Bullet Reading Lights Above Bed
- Extra Large Fixed Night Stands
- Coordinating Designer Comforter
- Lift Up Bed With Gas Struts And Storage
- TV Jack And LCD TV Bracket

## Utilities

- Satellite / Cable Hook-Ups
- High Capacity Furnace
- Water Pump w/ Winterizing Inlet
- LP Quick Disconnect (Gas Grill Ready)
- CO, LP, Smoke Detectors
- Fire Extinguisher
- Probeless Tank Monitors
- One-Touch Systems Monitor Panel
- 55 Amp Converter w/ Shore Line

## Ever-Lite Value Package (Included)

- Fully Enclosed, Heated Underbelly
- Six Side Aluminum Structure (3 Yr Warranty)
- AM/FM/CD/DVD w/Interior/Exterior Speakers
- 30 # LP Tank Cover with TOP Access Door
- 6 Gallon Gas/Electric Water Heater w/DSI
- Porcelain Toilet w/ Foot Flush Pedal
- High Output Exhaust Fan In Bedroom
- Outside Shower
- Ever-Lite Smooth Ride Suspension
- A&E Power Awning
- Spare Tire And Carrier Mounted Under A-Frame
- Black Tank Flush
- Swing Out Grab Bar
- Pleated Shades
- Fiberglass Front Cap With Led Lights
- 13,500 BTU Ducted A/C
- Radial Tires
- Nitro Filled, Balanced Aluminum Wheels w/ ICF Technology
- TV Antenna

## Travel Trailer Options

- 15k BTU Air Conditioner
- 20" LCD Flat Panel TV (Standard On 31BHS, 31DS & 31RB)
- Gas Oven
- High Output Exhaust Fan - Bath Room
- Solar Battery Charger
- Power Tongue Jack
- 20# See Through Composite LP Tanks
- Canadian Standards
- 19" LCD TV w/ DVD Bedroom
- 26" LCD TV IPO 19" Living Room
- Dual Pane Windows

## Fifth Wheel Standards (Not Available in Travel Trailers)

- 15" Balanced, Radial, Nitrogen Filled Aluminum Wheels
- 26" LCD TV
- Laundry Chute
- 42" Main Slide Depth 6'2" Interior Height
- Gear Driven - 4 Point - Slide System
- Electric Front Jacks w/ Snap Pins

## Fifth Wheel Options

- 16" Balanced, Radial, Nitrogen Filled Aluminum Wheels
- Electric Rear Stabilizer Jacks
- 32" LCD TV
- 19" LCD TV w/DVD - Bedroom
- Free Standing Table and Chairs
- Hide-a-bed Air Mattress
- Gas Oven
- Solar Battery Charger
- 10 Blade Power Fan in Bathroom
- 15K BTU A/C
- Reese Revolution 90 Degree Turn 10K Hitch
- Tankless Water Heater
- Slide Out Bike Rack
- Dual Pane Windows

## Additional Items

- 3 Year Limited Structural Warranty
- 2 Year Limited Bumper To Bumper Warranty
- 12 Year Limited Roof Warranty
- 24/7/365 Roadside Assistance For Tire Failure
- We Participate In The "Trees For The Future" Program
- When Ever-Lite Receives Your Warranty Registration A Tree Is Planted In Your Name



Eighty-four percent of a typical household's waste--including food scraps, yard waste, paper, cardboard, cans, and bottles--can be recycled

# The Ever-Lite™ Advantage: We've Got It! Standard.



High Output Fan  
in Bedroom



Probeless Waste & Fresh  
Water Tank Monitors



Waste Recycle Bin



Our CompositTek™ Construction is Built to Last!



Detachable Power  
Cord with LED Light

## KEY FEATURES

1. 6" Solid I-Beam Chassis
2. Fully Enclosed and Heated Underbelly
3. Radial Tires
4. CompositTek™ Aluminum Framed Bonded Floor
5. CompositTek™ High-Gloss Aluminum Framed Bonded Wall
6. CompositTek™ Aluminum Framed Bonded Roof
7. Composite Solid Baggage Door with Compression Latches
8. Deep Tint Radius Safety Glass Windows
9. LCD TV Exterior Hook-Up with Outside Speakers
10. Fiberglass Composite Gel Coated Front Fiberglass Cap with LED Lights
11. Power Awning
12. Porch / Safety Light Combo (Two Lights in One)



Comfort Fiber  
Eco Pillowtop Mattress



Convection Microwave  
& Pots 'n Pans Drawer



Porcelain Foot  
Flush Toilet



BLACK  
TANK  
FLUSH

Black Tank Flush



We go above and beyond RVIA quality standards set by our industry  
- focused on green products and manufacturing processes.



### Partners with Quality Vendors



### Buying Local – Your Best Option

- Enjoy the convenience of local representatives who will help you understand all the features of your new RV and answer any questions you have.
- Before taking your new RV home, you'll receive a complete walk-through demonstration of all of its systems and options, and will be introduced to several key members of the Dealer's staff who will be able to help you with any future questions.
- Your local dealership routinely gives their own customers priority scheduling when it comes to scheduled maintenance and/or repair work. Making sure you're one of their local customers saves you time by getting you scheduled sooner!
- Keeping your hard-earned dollars in the local community helps keep jobs available, schools open, and pays for various public services such as fire, police and ambulance.

Your Authorized EverGreen™ Dealer:



[www.GoEvergreenRV.com](http://www.GoEvergreenRV.com)

10758 County Road 2 • Middlebury, IN 46540  
Phone: (574) 825-4298 • Fax: (574) 825-4299

## Quality 1st Priority Program



Rain Booth Testing  
1/2" per minute



Seal Tech Leak Test



Gas Test – PDI



Water Pressure Test - PDI



Electrical Testing – PDI



Color coded wire schematic



Weight Scales Recessed In the Floor



Systems Check – PDI



16<sup>th</sup> Annual **RVDA DEALER SATISFACTION INDEX**  
2009 Honorable Mention Award



Service available throughout the USA and Canada